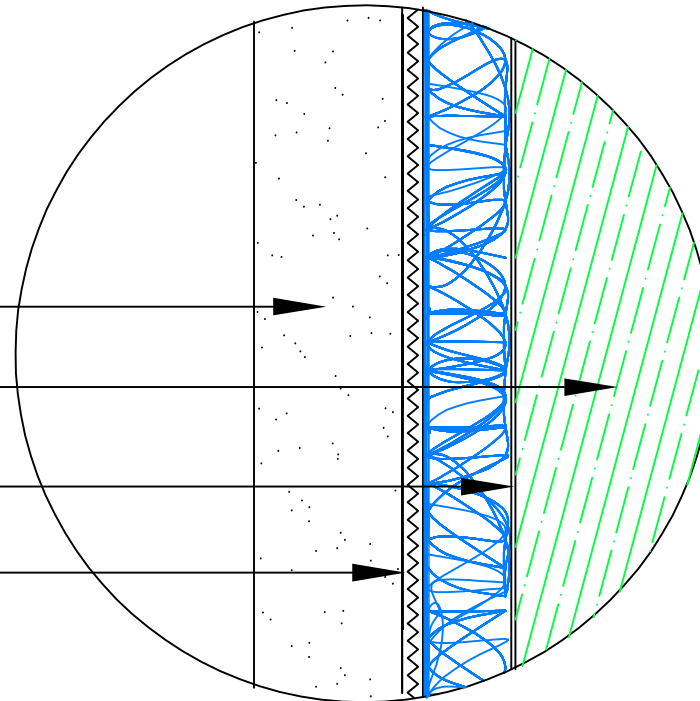
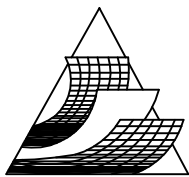


3 LAYERS OF STUCCO
SHEATHING
WEATHER RESISTANT BARRIER
METAL LATH/ SCRATCH COAT



ENLARGED STUCCO DETAIL



ADVANCED BUILDING PRODUCTS, INC.
P.O. BOX 98
SPRINGVALE, ME 04083

PHONE: 1-800-252-2306 FAX: 1-207-490-2998
WWW.ADVANCEDFLASHING.COM

PRODUCT NAME: **mortairvent**[®]

NOTE: **mortairvent**[®] MATRIX (BLUE) SHOULD BE INSTALLED FACING THE WEATHER RESISTANT BARRIER, WITH THE MORTAR DEFLECTION FABRIC AGAINST THE METAL LATH FABRIC (FACING THE EXTERIOR WALL).

DRAWING NO:
MV-STUCCO-LGD